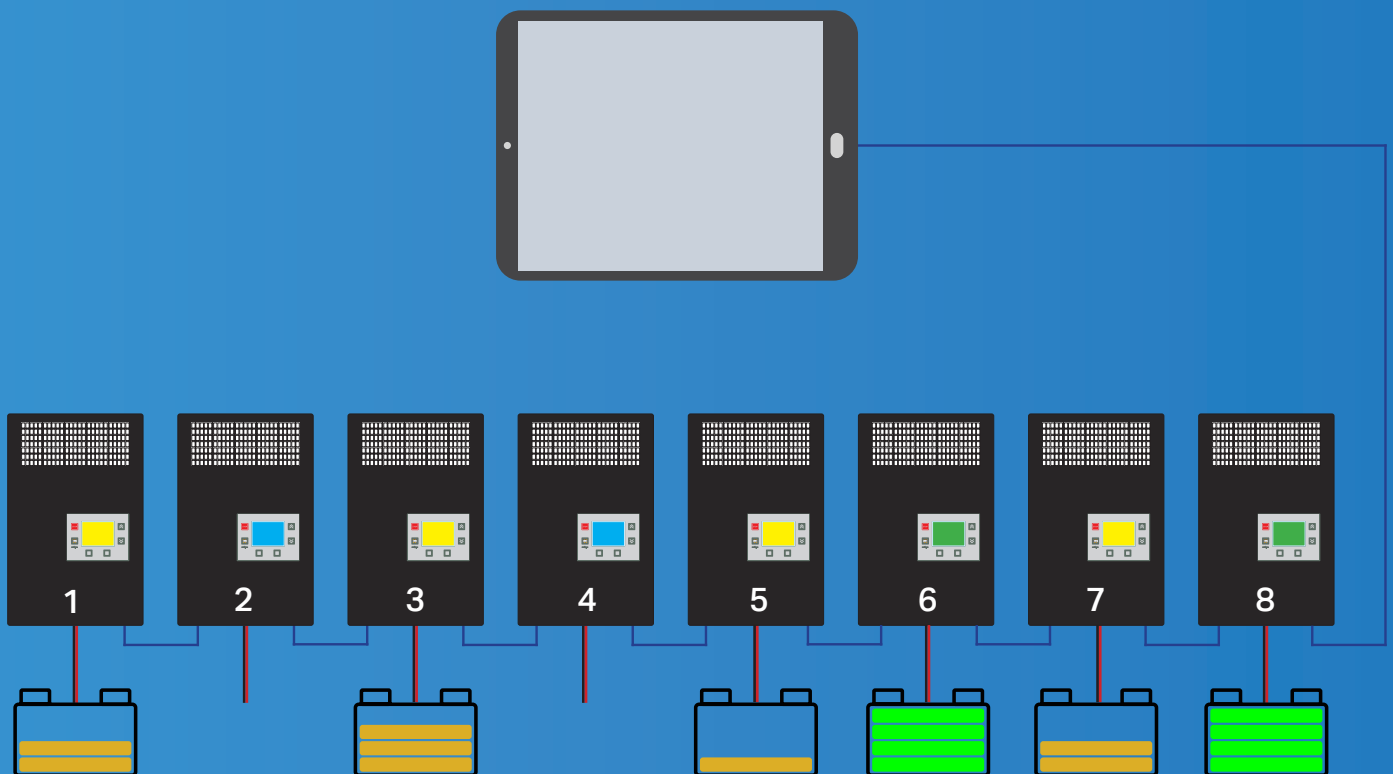


AXIMON

MONITORING OF CHARGING STATION
CONTROLLING OF POWER CONSUMPTION

www.axima-power.com



KEY FEATURES

- Clear overview about charging station
- Settings limit of power consumption o whole charging station
- Batteries are charged despite lower power limit
- The platform for configuration software AXISET - remote settings
- Modular solution, settings, CS and EN versions



AXIMON allows watching the charging and setting the parameters.

AXIMON INTRODUCTION

AXIMON is the software intended for monitoring the states of FLEXIS chargers in the charging station. It allows set power supply limit for charging station. The software runs on Windows 10 laptop or tablet. All hardware components of the AXIMON system are located directly in the charging station. Communication between chargers and control computer is via CAN line. The application collects data about charging from chargers and regulates a power supply limit.

FLEXIS	1	FLEXIS	2	FLEXIS	3	FLEXIS	4
Voltage	30.4 V			Voltage	13.6 V	Voltage	27.1 V
Current	13.6 A			Capacity charged	0.1 Ah	Current	8.0 A
Charging end in	0:00			Charged for	0:15	Charging end in	0:00
Battery ID				Battery ID	HhE35000	Battery ID	SKLAD_B9
Battery temperatur				Battery temperatur	26 °C	Battery temperatur	24 °C
Errors		Errors		Errors		Errors	

Operation mode

Control

Maximum charging power: 10000

Application security

Old password:

New password:

Repeat new password:

Language

English

COM Port settings

COM Autoselect

Error display settings (F)

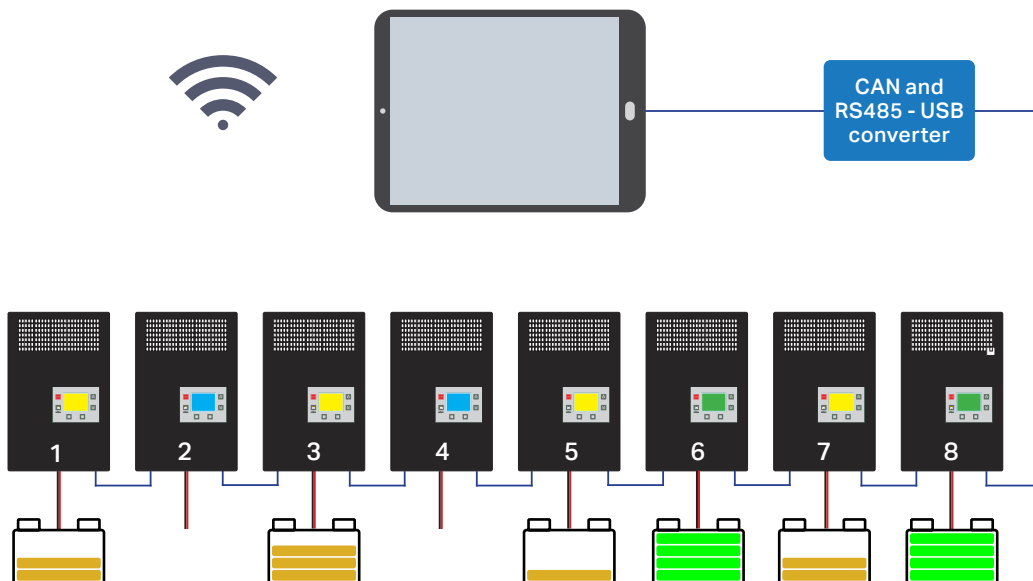
F10 Fatal Different voltage levels of power units	F11 Fatal High battery impedance	F12 Fatal Unsuitable battery was connected
F13 Fatal Charged battery was connected	F14 Fatal Battery voltage has exceeded the maximum va	F15 Fatal Different voltage levels of power units
F16 Fatal Battery temperature is too high	F17 Fatal No description	F18 Fatal Low level of electrolyte
F21 Fatal Maximum I1 phase time exceeded	F22 Fatal Maximum U1 phase time exceeded	F23 Fatal Maximum I2 phase time exceeded
F31 Fatal Charging current is too low	F32 Fatal Charging current is too high	F33 Fatal Charging current is too high
F35 Fatal More than 125% of nominal capacity was sup	F40 Fatal Communication with power unit failed	

Error display settings (E)

E11 Fatal Deeply discharged battery	E12 Fatal Incorrectly disconnected battery	E13 Fatal Overheated battery
E14 Fatal Overheated charger	E15 Fatal Too high battery voltage	E21 Fatal I1 phase is too long

REMOTE SETTINGS

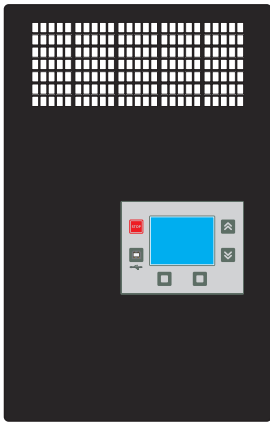
Computer or tablet with AXIMON software is possible to connect to the internet. Users can use one of the common applications for remote control and connect to the AXIMON computer from anywhere. The connection of UTP cables between the chargers allows operation on both CAN and RS485 lines. The RS485 line allows users to send data with settings from the configuration software (AXISET or AXIFF). It is a possibility how to configure the chargers remotely.



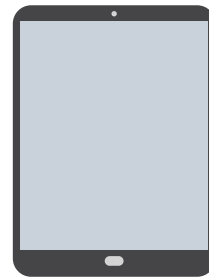
HW CONFIGURATION

AXIMON hardware elements:

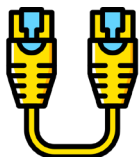
- FLEXIS NG charger + FLEXIS EXT UNIT extension board + AXIFF CAN RJ45
- UTP cables pfor net connection
- CAN and RS485 - USB convereter
- PC / laptop / tablet with Windows 10



FLEXIS equipped by
FLEXIS EXT UNIT
AXIFF CAN RJ45



tablet / computer
with WIN10




UTP cable

CAN and RS485 -
USB
converter

converter



-  Vídeňská 125, Brno 619 00, CZ
-  acdc@axima.cz
-  +420 546 418 859
-  [www.axima – power.com](http://www.axima-power.com)